

PARTS CATALOG

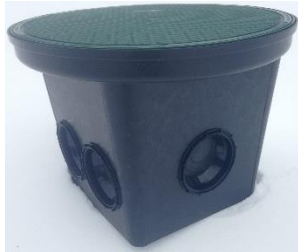


	<p>Advanced ENVIROSEPTIC pipe: each pipe is 3.05 m in length, with an outside diameter of 30 cm and a large storage capacity. The set of membranes surrounding the pipe includes the Bio-Accelerator.</p> <p>(Sku# ESP, Pipe)</p>
<p>Single offset adapter: end cap fitted with a 100 mm offset opening at the 12 o'clock position.</p> <p>(Sku# ESP, S Adaptor)</p>	
	<p>Piezovent: end cap (new double offset adaptor) with horizontal opening for the vent and vertical opening for the piezometer.</p> <p>(Sku# ESP, Pz-Vent Adaptor)</p>



Coupling: fitting that joints two pieces of Advanced ENVIRO))SEPTIC pipe together.

(Sku# ESP, Coupler)



Distribution box: use to divide and/or control the septic tank effluent flow into the ENVIRO))SEPTIC rows of pipe.

(Sku# ESP, D-Box)

Pipe Adapter: use in the distribution box, it is used to fit the 4 in. PVC pipe

(Sku# ESP, Seals, D-Box)



Distribution box insulation: internal insulation for the distribution box.

(Sku# ESP, FI D-Box)

Equalizer : plastic insert installed in the outlet lines of a distribution box to provide more equal effluent distribution to each outlet.

(Sku# ESP, Equalizer)





15 cm Riser: the distribution box has to be accessible, risers are used to raise the cover to ground level.

(Sku# PL-20X6R)

30 cm Riser: the distribution box has to be accessible, risers are used to raise the cover to ground level.

(Sku# PL-20X12R)



Sampling port: vertical access port to retrieve samples of the treated effluent from the ENVIRO))SEPTIC system.

(included with Sku# ESP, Sample Device)

Sampling tray: used to collect samples of the treated effluent from the ENVIRO))SEPTIC system.

(Sku# ESP, Sample Device)



Green Piezometer End Cap: watertight cap for piezometer.

(Sku# ESP, Pz End Cap)



Pre-drilled nested pipe: our pressure pipe is green 38 mm dia. PVC Sched 40. Pipe is available in 3.05 m (10') or 1.5m (5') lengths and is pre-drilled prior to delivery. The pre-drilled holes are 4.78 mm (3/16") at 1.5 m spacing.



(Sku# ESP, GPP,10)
(Sku# ESP, GPP,5)



Row assembly kit: kit includes a nested pipe end cap fitted with 100 mm and 38 mm openings, a row entry pipe and a row cleanout pipe.

(Sku# ESP, RAK)

Field assembly kit: kit includes a header cleanout pipe and a pump force main adaptor.

(Sku# ESP, FAK)



Centre-to-centre pipe: a solid white PVC Sched 40 pipe, approximately 2 m in length, used to join each row together to make up the header system.

(Sku# ESP, GPP,W)

